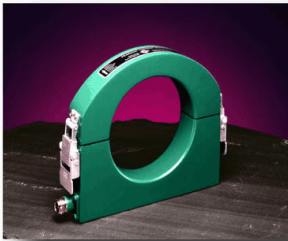


PEARSON™ CLAMP-ON CURRENT MONITOR MODEL 7815



Sensitivity	0.01 Volt/Ampere $\pm 1\%$
Output resistance	50 Ohms
Maximum peak current	50,000 Amperes
Maximum rms current	400 Amperes
Droop rate	1 %/millisecond
Useable rise time	200 nanoseconds
Current time product	3.0 Ampere-second maximum
Low frequency 3dB point	1.5 Hz (typical)
High frequency 3dB point	2.0 MHz (typical)
I/f figure	15.0 rms Amperes/Hz
Output connector	BNC (UG-290 A/U)
Operating temperature	0 to 65°C
Weight	6 pounds

© 2005 Pearson Electronics, Inc. 7815.wpd 050330

